

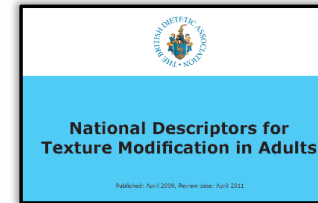
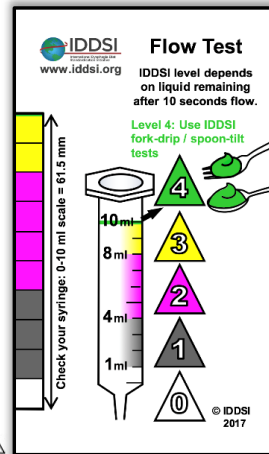
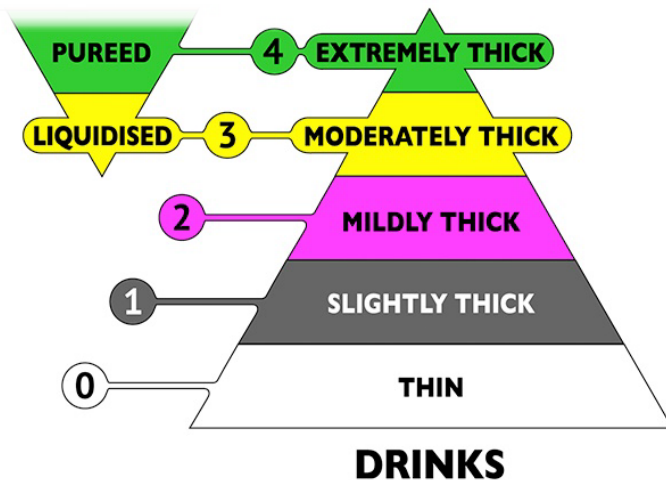
LIQUIDS: Comparing the UK National Descriptors with IDDSI



The IDDSI Levels are clearly defined by **measurement** using the flow test for Levels 0-3 and the spoon/fork tests for Level 4.



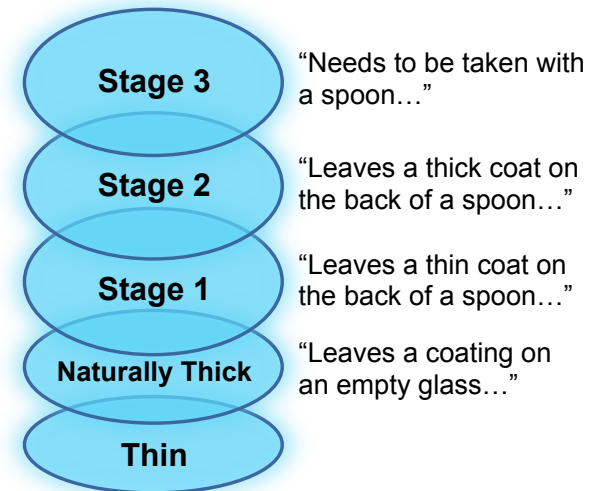
Use IDDSI tests or new product guidelines to determine IDDSI Level.



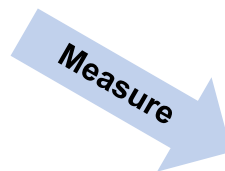
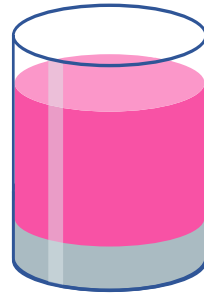
The descriptors broadly match the IDDSI levels 0-4. However these are **subjective, not specific**.

Product labelling with National Descriptors was not definitive.

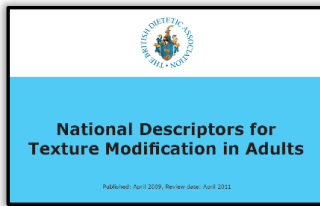
Don't assume a certain product maps across directly to a certain IDDSI Level.



How thick is your drink?



Moving from National Descriptors to IDDSI

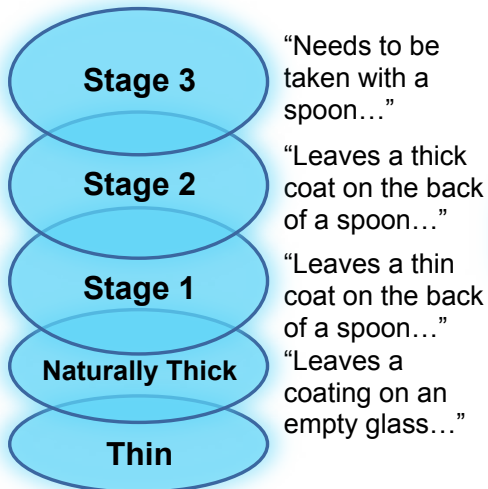


Product labelling with National Descriptors was estimated. Not definitive.

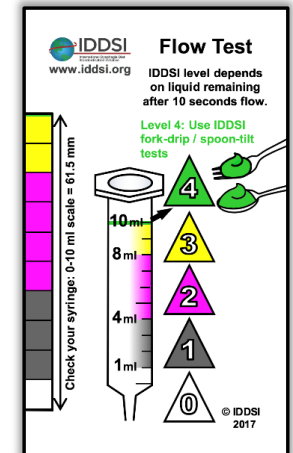
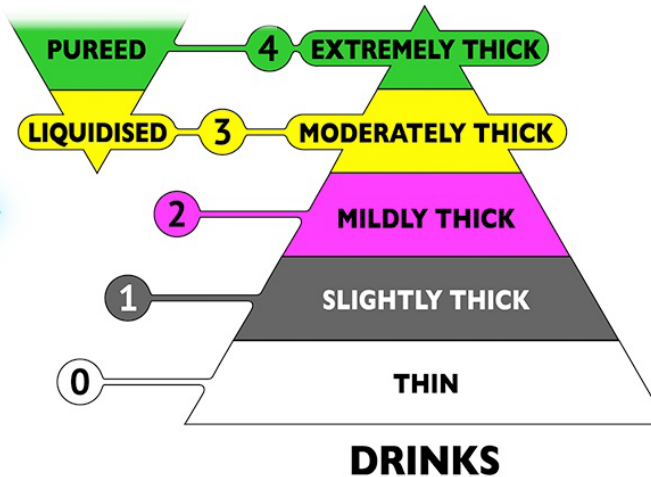


The IDDSI Levels are clearly defined by **measurement** using the flow test for Levels 0-3 and the spoon/fork tests for Level 4.

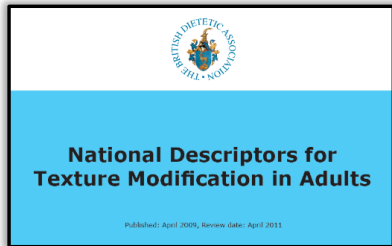
Use IDDSI tests or revised product guidelines to determine IDDSI Level.



The descriptors broadly match the IDDSI levels 0-4. But descriptors are **subjective, not specific.**



LIQUIDS: From UK National Descriptors to IDDSI



Subjective, estimated

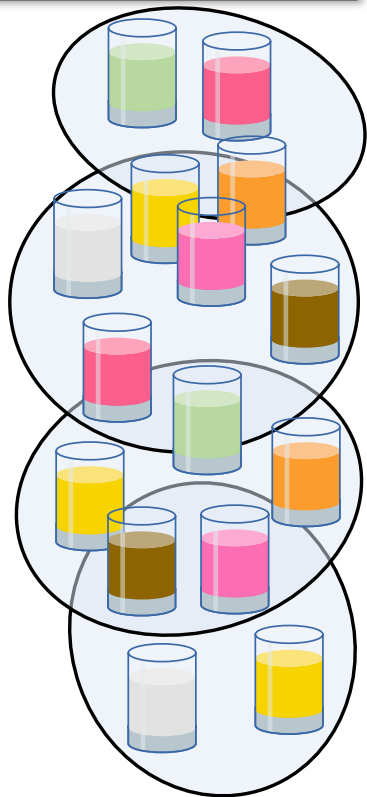
The categories were not clearly defined.

“Needs to be taken with a spoon...”

“Leaves a thick coat on the back of a spoon...”

“Leaves a thin coat on the back of a spoon...”

“Leaves a coating on an empty glass”



Objective, measured

The IDDSI Levels are defined by **measurement** using the flow test for Levels 0-3 and the spoon/fork tests for Level 4.

The descriptors broadly match the IDDSI levels 0-4. But descriptors are **subjective, not specific.**

